

# HOW TO CONFIGURE and JAVA 1.8 (For Asycuda 2018)

## STEP 1.

Click Start and type **CONFIGURE JAVA**

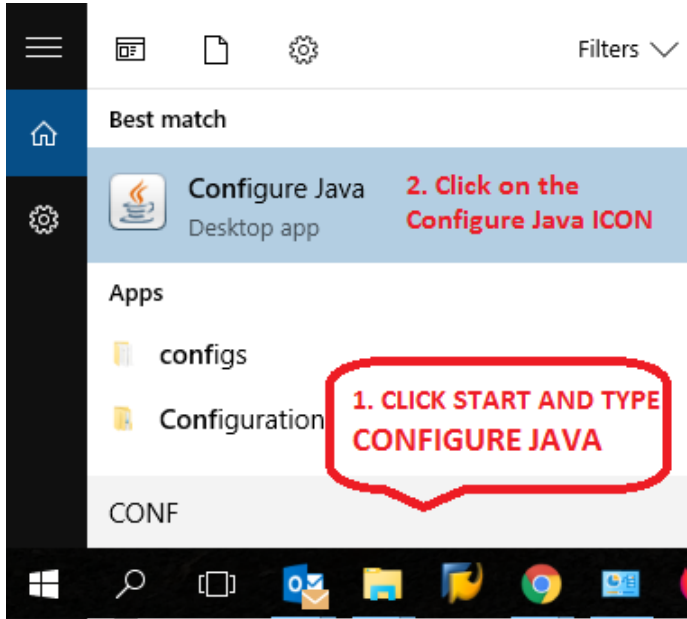


Fig.1

STEP 2. Click Java tab > then click the View button

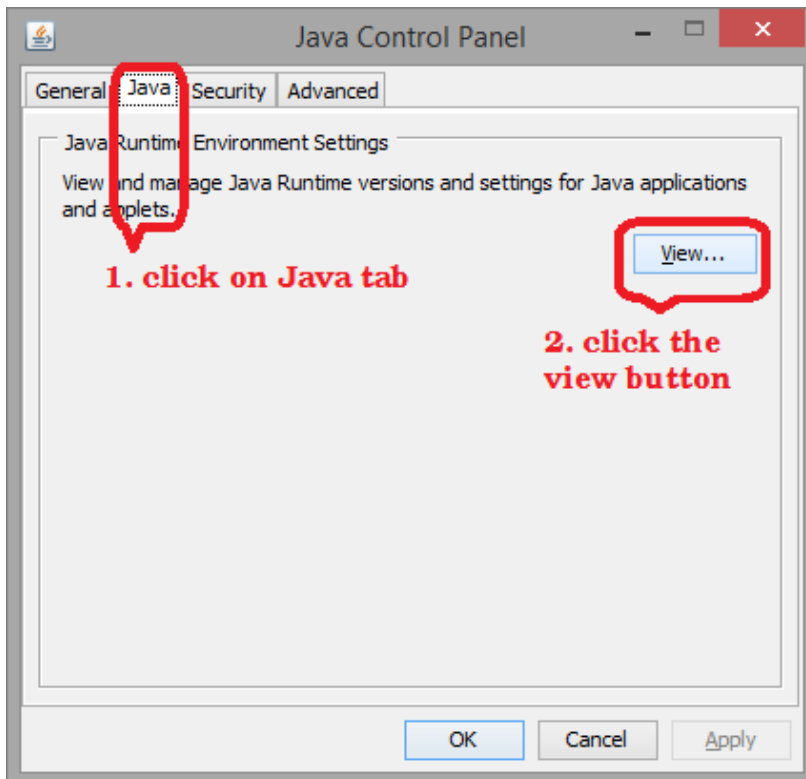


Fig. 3

The screen below will appear.

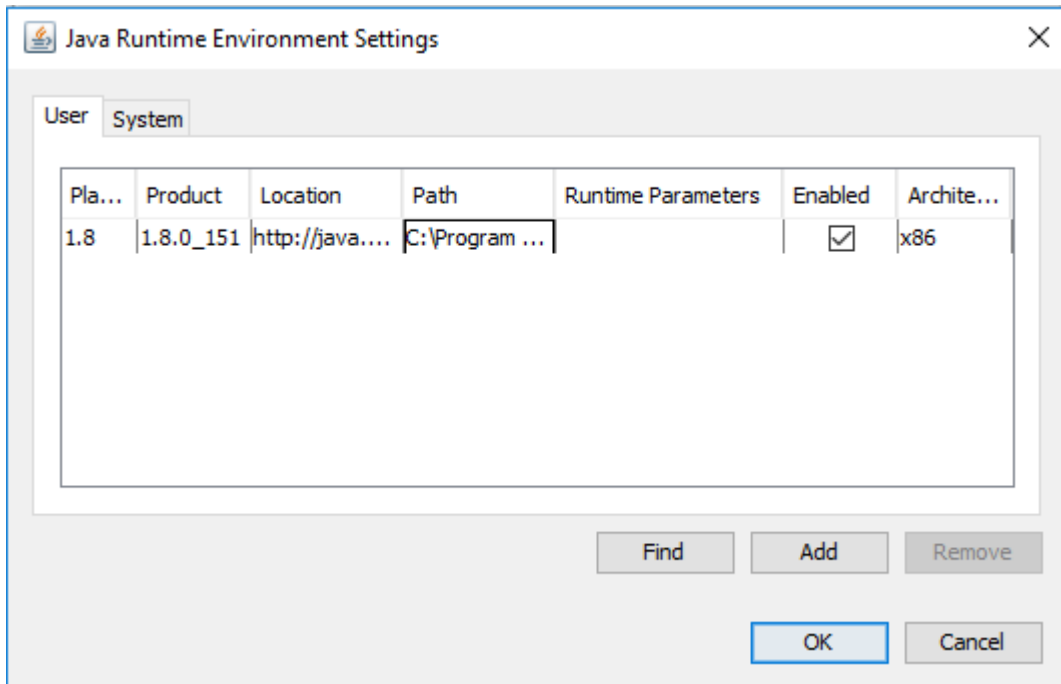
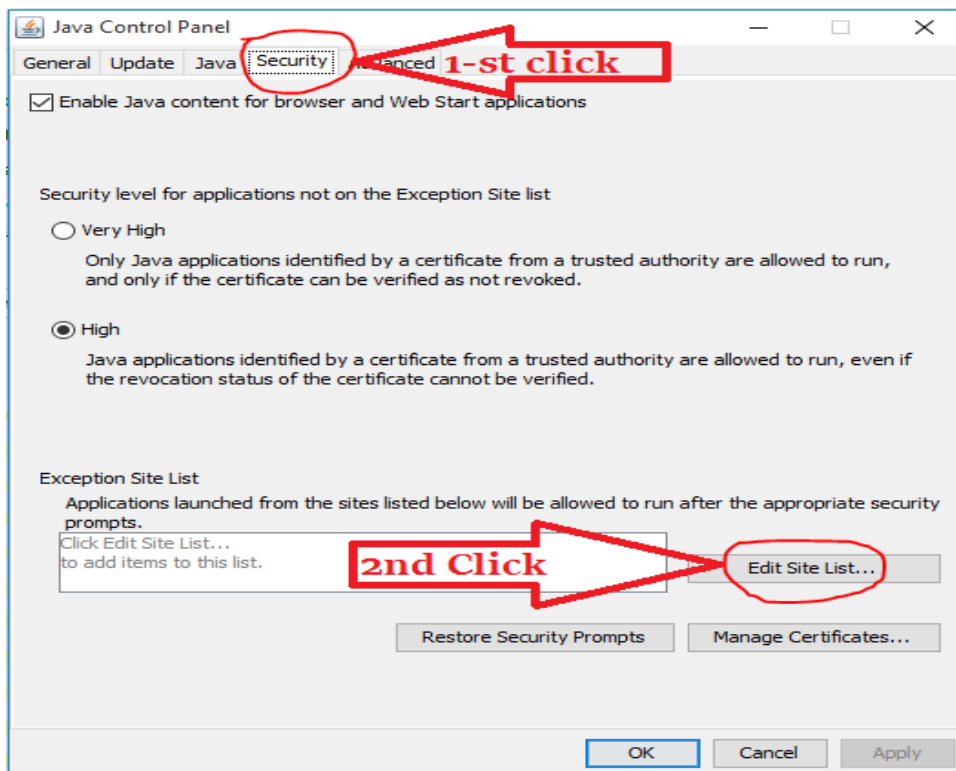
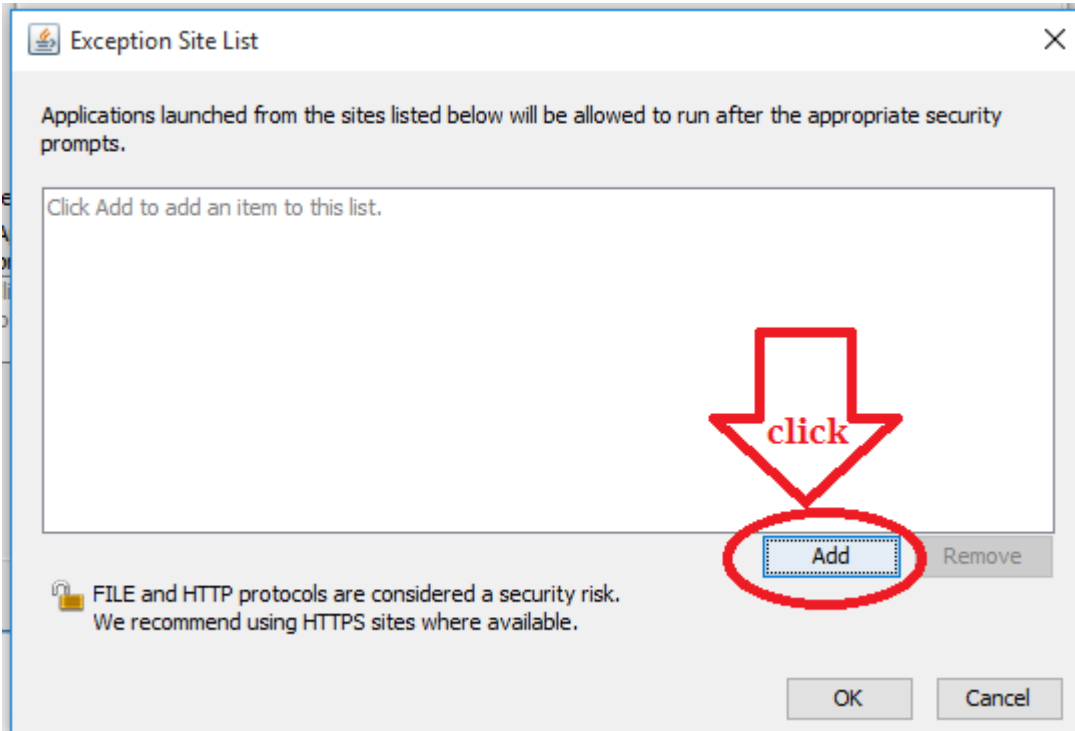


Fig. 4

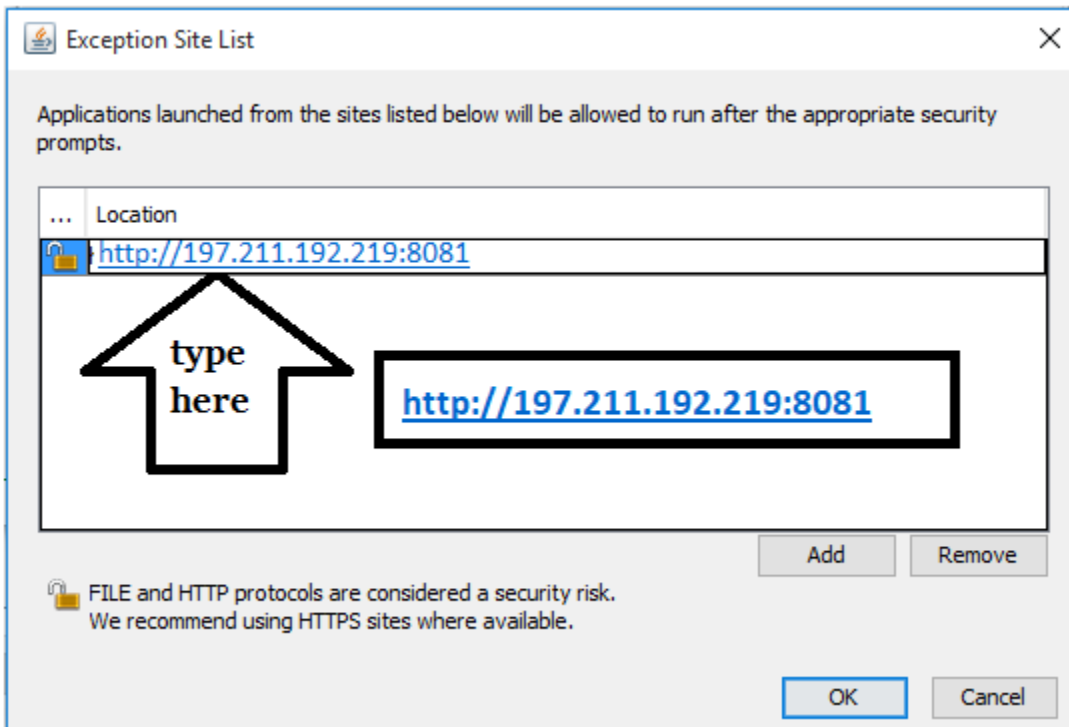
**STEP 3.** Go to the **Security** Tab and Click **Edit Site List...** as shown below



#### STEP 4 CLICK ADD

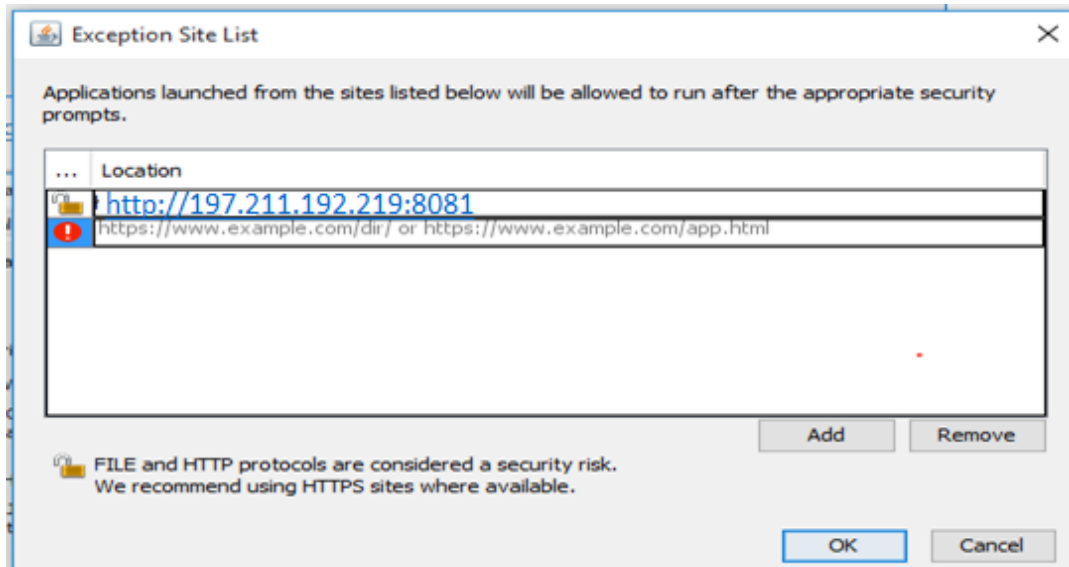
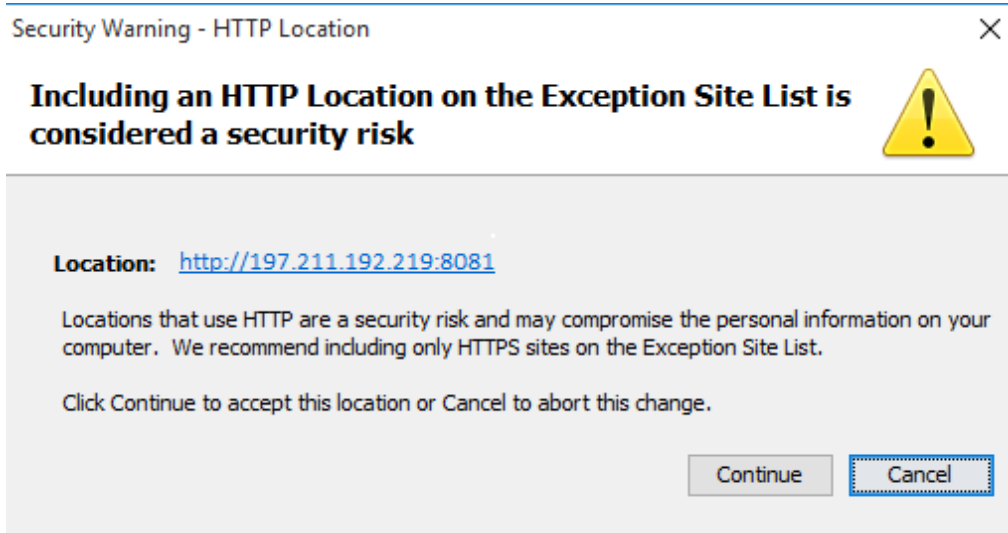


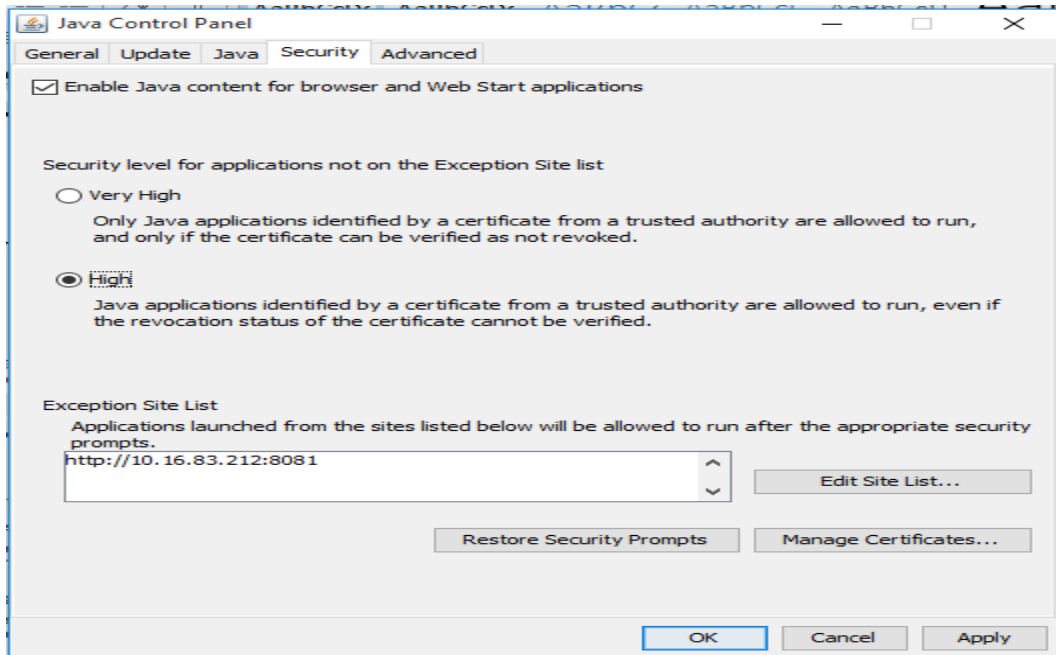
#### Step 5. Click **Add** as shown below



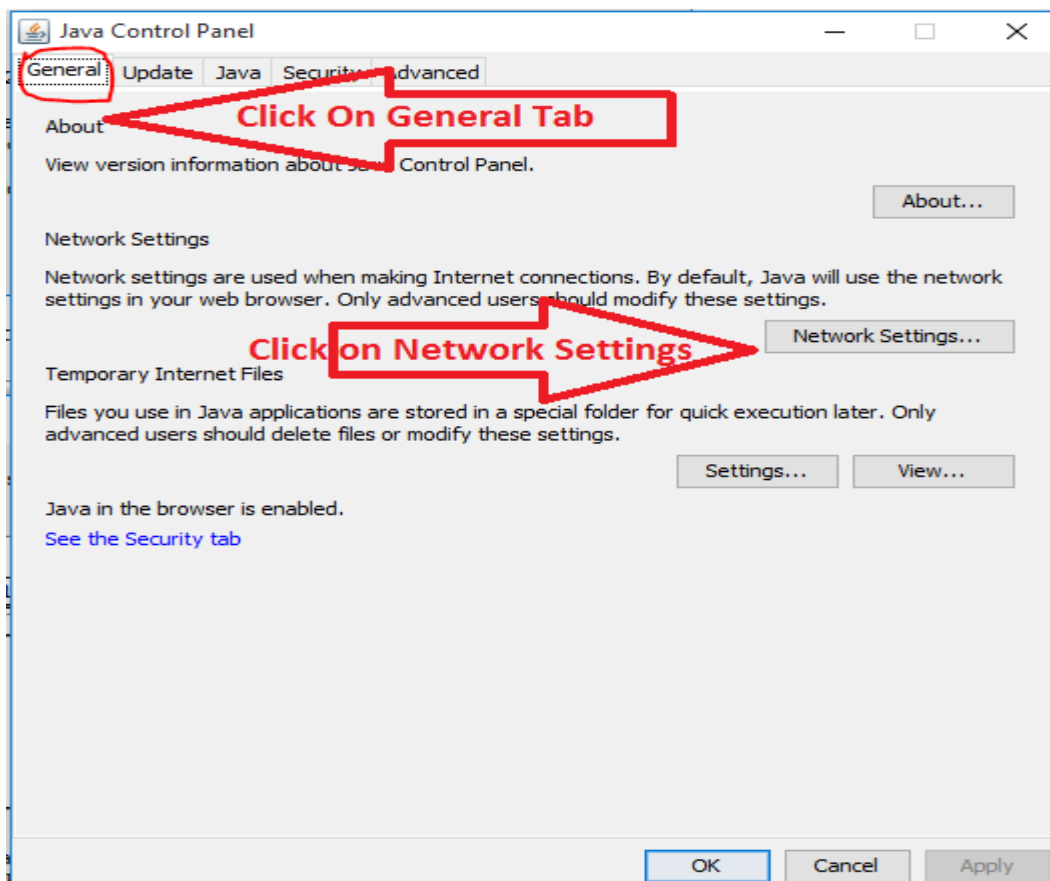
Under Location type <http://197.211.192.219:8081>

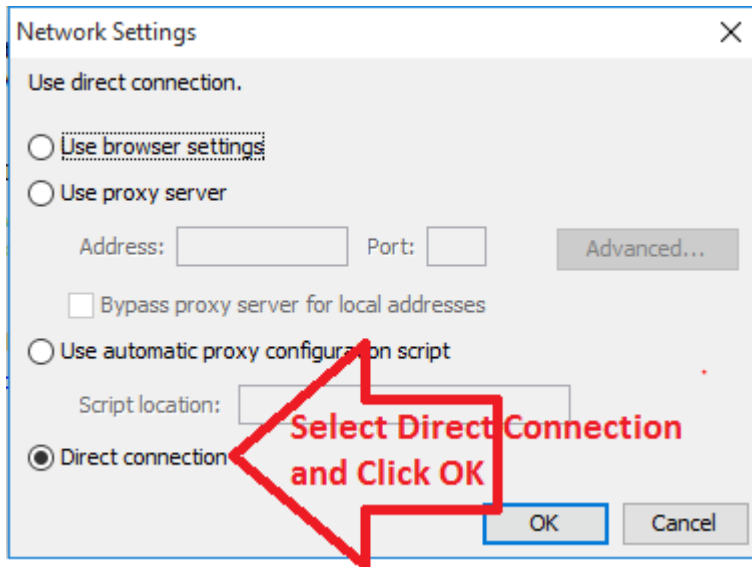
Step 6. On this prompt message click **Continue** and then **OK**





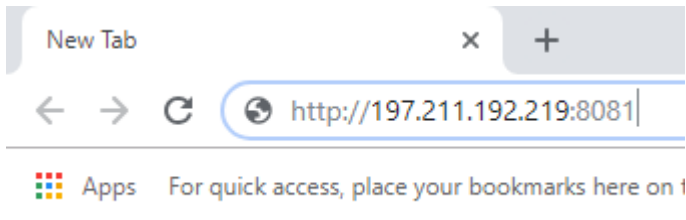
Step 7. Click on the **GENERAL** TAB, then Network Settings, and select Direct Connection.





Click OK to Close.

**Step 8.** Open your internet Browser and you can Now Access ASYCUDA WORLD typing <http://197.211.192.219:8081> on the address bar.



On the following prompts,

**Step 9.** Tick do not ask and later

**Step 10.** Click accept the risk

**Step 11.** Click Run

**Step 12.** Click allow this application to run

You are now able to Log into Asycuda World